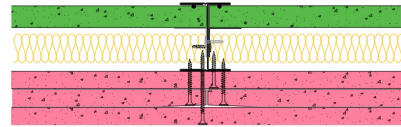


## **SE60-S-72(25) - SPEEDLINE System Data Sheet - Version V1 (24-10-23)**

SPEEDLINE 60mm 'I' Stud Shaft Encasement  
 @600mm Ctrs, with 3x Siniat GTEC 15mm Fire  
 Board, Siniat GTEC 19mm Fire CoreBoard, 25mm  
 APR



### **System Performance Breakdown**

Fire Resistance:

BS476 Part 22:1987:

Test Ref & Date or Applied Ref & Report:

Max Height:

Thickness:

Duty Grade: BS 5234: Part 2:1992:

Sound Insulation:

**120/120** (Integrity/Insulation) Minutes from both sides.

P100456-1180 & **BRE Report P102396-1012C**

**Refer to Speedline Specification Clause**

**107 mm.** (At Base Track, Excluding Finishes)

**Severe - Annexes A-F**

**49 R<sub>w</sub>dB**, Date Tested or Assessed Against -

TESTED AT ONE OF THE UKAS  
 ACCREDITED LABORATORIES  
 BELOW

B.T.C  
 (H-Ref on Graph)



B.R.E



AIRO



S.R.L

